

# Welcome to “Wootoona”

Michael Evans



# “Wootoona”

- A local case study of the on-going development of balanced farming resources



# A local case study

- Brief History
- Where we were
  - 10 years ago
- Where we are now
  - some of the tools that we have used
- Where we are going
  - the next 10 years

## Brief History

- People
  - Dick & Jennie, Michael & Janie
- Rainfall
  - Annual average 614mm
- Enterprises
  - Beef, Prime Lambs, Wool
  - All breeding / Self Replacing

# Brief History

- Soils
  - Sandy Loam / Clay
- Property size
  - 650 hectares

## **Where we were 10 years ago**

- Set stocked
- 3 Enterprises – bred merinos
- Shorthorn x Friesian breeding cows
- Very little rest periods for the pastures

## **Where we are now**

- We have less mobs
- We are providing rest periods for pastures
- Have gone from 32 paddocks to 60 paddocks
- Now only have 2 enterprises
- We have fenced off creeks
- We are planting shelter belts

## **Where are we now**

- We have added water points
- We benchmark each year
- We monitor stock and soils regularly



## Our farm toolbox

- Grazing chart
- Benchmarking and Cost of Production (CoP) calculators
- Grazing principles
- Fencing & Water
- Australian Land Management Group (ALMG) accreditation
- Perennial plants

## Our farm toolbox

- Soil testing
- Introduced dung beetles
- Worm advisor
- Utilise contractors – spraying & seeding

# **Grazing principles**

- **1. Plan, Monitor, Manage**
  - Purpose: For people to be in control which reduces stress = healthy people
- **2. Plants need adequate rest**
  - Purpose: Creates healthy and productive plants
- **3. Match stocking rate to carrying capacity**
  - Purpose: Creates healthy pasture

# **Grazing Principles**

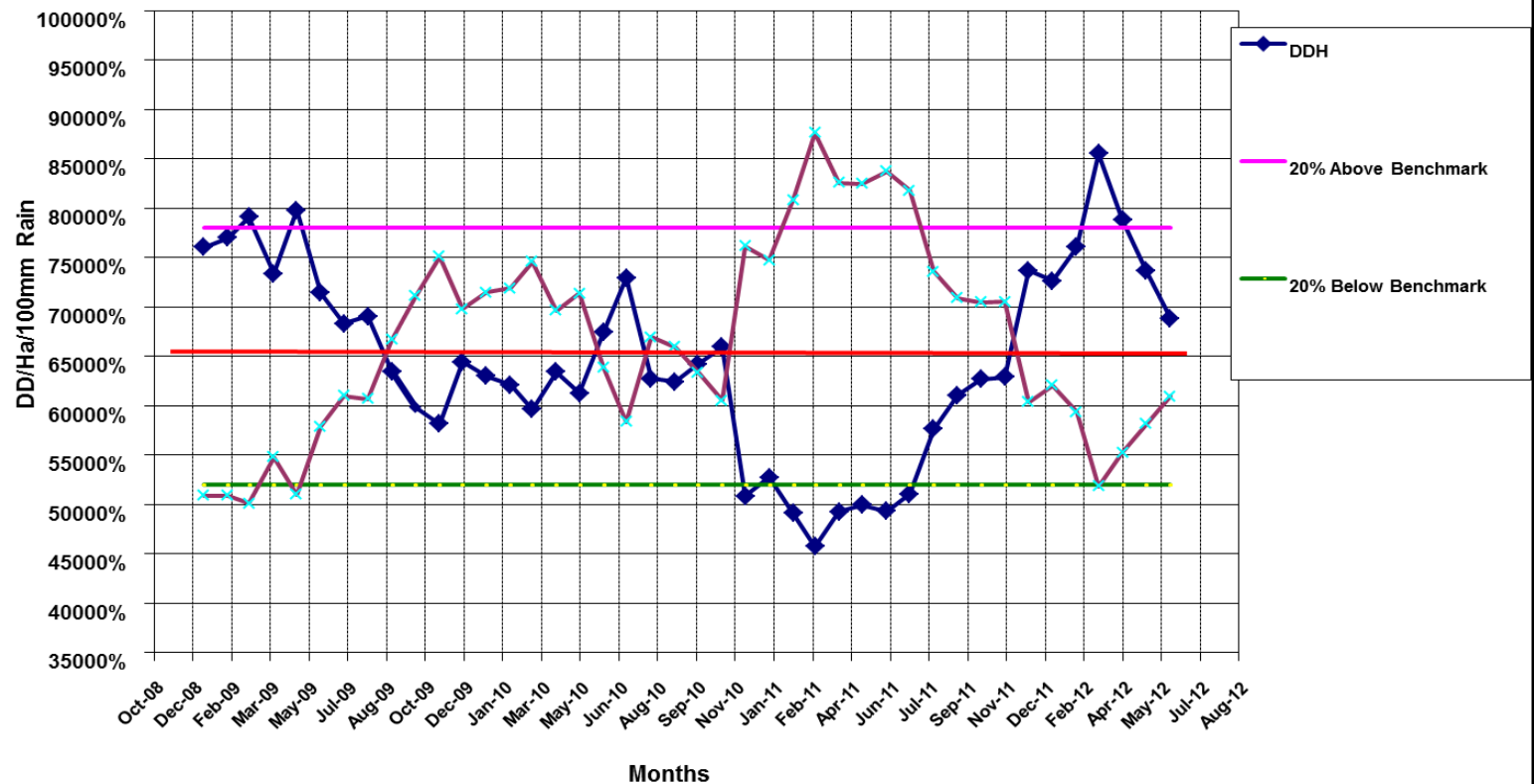
- **4. Maximum stock density for minimum time**
  - Purpose: High stock density = healthy soils
  
- **5. A short grazing period**
  - Purpose: Short grazing period = healthy animals
  
- **6. Animal husbandry to minimise stress**
  - Purpose: = healthy animals

## **Grazing principles**

- **7. Infrastructure for better animal and land management**
  - Purpose: Wire & water infrastructure are used to maximise pasture utilisation and achieve grazing goals
  
- **8. Biodiversity of plants & animals**
  - Purpose: Create an environmental balance

# Grazing Chart

WOOTOONA GRAZING CHART



# Dung Beetles – Bubas Bison





# Dung Beetles - Summer





# Central Water Point

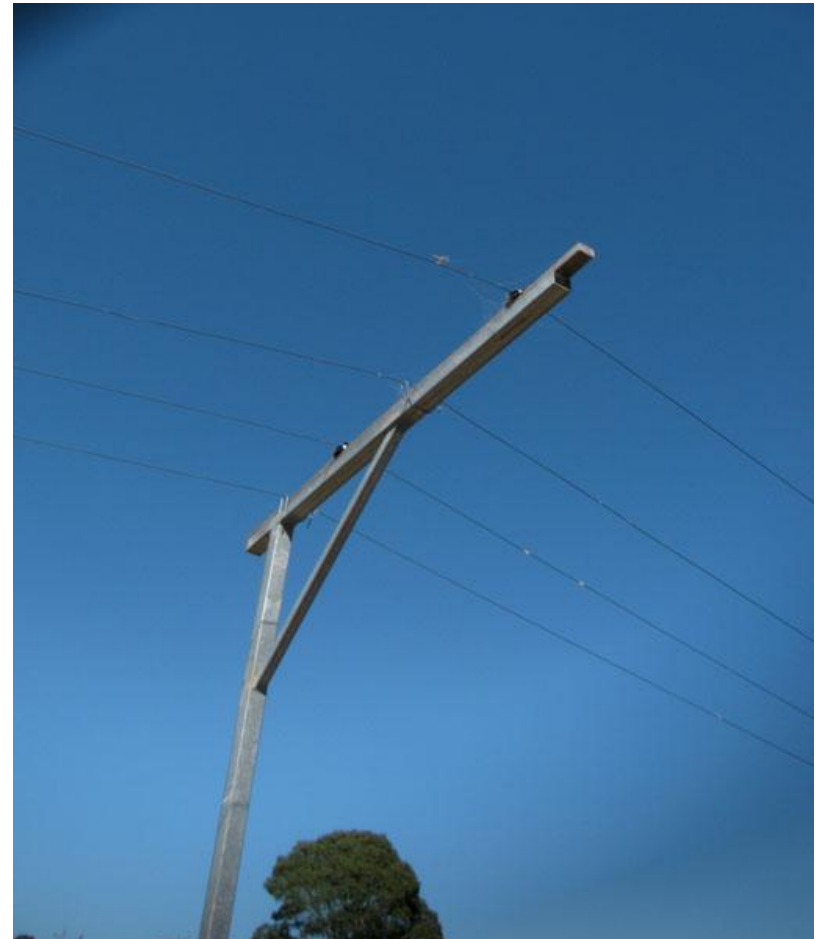


# Central Watering Point – 8 Paddocks





# Fencing – Lift up Gates



# Fencing – Solar Electric Fencing



# Shelter Belts



## Where we are going

- Keep benchmarking & monitoring
- Continue to improve our soils
  - Increase organic matter
- Grow and utilise more grass
- Keep a balance
  - People, Environment, Profit



