

# FMD – what do we do?

Roger Paskin, Chief Veterinary Officer

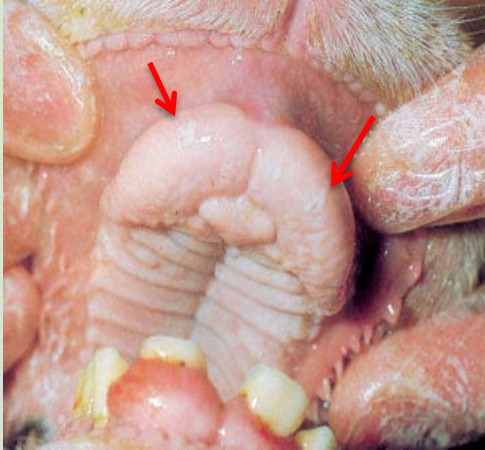


# Firstly, can it occur here?

- Our borders are porous (EI, Pigeon paramyxovirus, rabbit calicivirus)
- We know that potentially infected meat products have been smuggled into Australia
- We know that swill feeding occurs



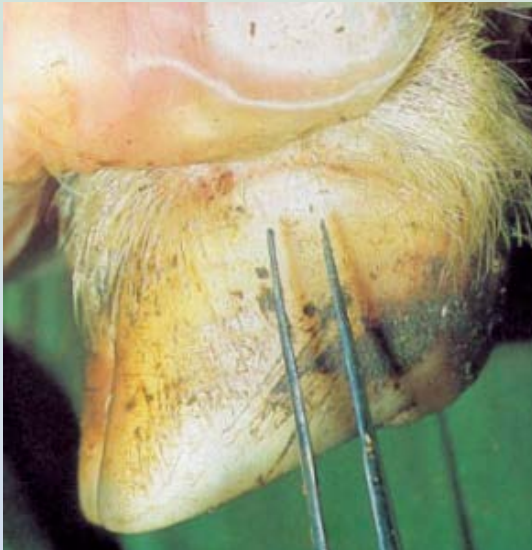
# FMD – what would you see?



Sheep - 1 day old unruptured vesicles (blister) - DEFRA



Sheep – 2 day old lesion - DEFRA



Sheep's foot with 1-day-old unruptured vesicle along the coronary band. Photo: DEFRA



Sheep's foot with 10 day old healed coronary band lesion Photo: DEFRA

# Who is involved in a response?

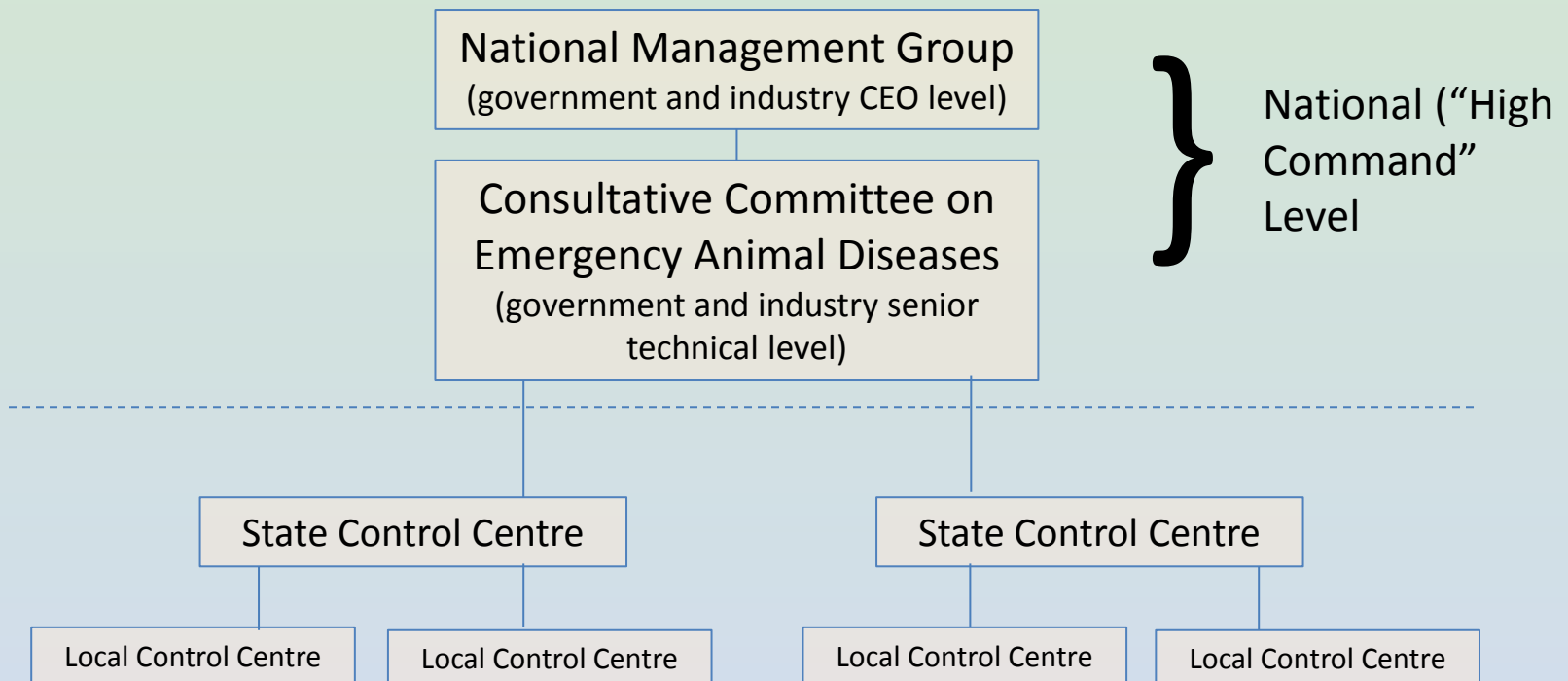
- Governments
- Laboratories/research
- Industry

## **WHAT THE RESPONSE ENTAILS**

- Find & confirm disease
- Quarantine
- Tracing
- Valuation
- Destruction
- Disposal
- Decontamination
- Vaccination in densely stocked areas
- Restocking
- Area-wide proof of freedom

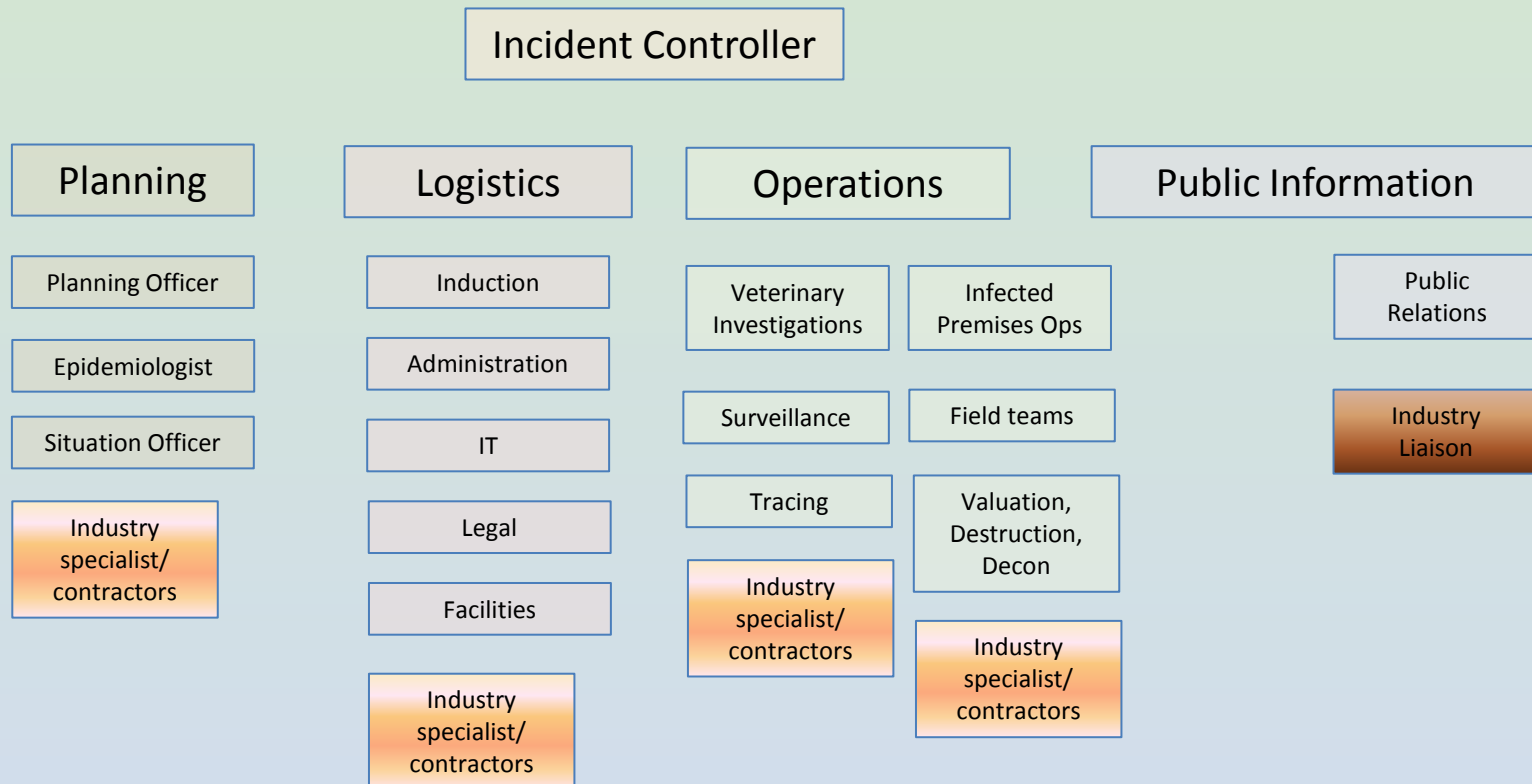
# Industry at High Command Level

- Industry peak body representatives in CCEAD and NMG



# Industry at State Level

- Within State and Local Control Centres:



# In a response, we need:

- Trained Industry Liaison Officers – advise PIRSA of industry needs/ideas and communicate response info to industry (paid by industry)
- Contractors (paid by PIRSA) for (e.g.):
  - Assistance with surveillance
  - Assistance with destruction
  - Assistance with vaccinating
  - Provision of intelligence

But more than anything, we  
need industry involvement  
*before* any response!

- Detection and reporting
- Be aware of the risks
- Be aware of the clinical signs
- Be willing to let us know



**EAD Hotline**  
**1 800 675 888**

# The End!

